



# CRUZIANA

GEOPARK NATURTEJO DA MESETA MERIDIONAL-EUROPEAN AND GLOBAL GEOPARK - MONTHLY REPORT

**In this issue:** – An amazing 3rd place for Geoparks in the “Best Exhibitor Award”– Naturtejo Geopark in the International Birdwatching Fair – European Geoparks Coordination Meeting held in UNESCO headquarters – Easter join Jewish and Christian traditions in a single festival...and more!



Olá/Hola/Ciao/Bonjour/Γειά σου/Hallo/God Dag/Salut/Zdravo/Hello/Ahoj/Helo/Helló/ Hei

## **Geo-stories of our places and people: Tinalhas**

“Here they are, the sanguine cork oaks, the twisted olive trees, trunks that seemed muscles after being dissected, (...) and the dusk dark ranches, coming from the mounted, when a never-ending wide peace, remains hanged, thus the Winter smokes, above the panting land, and the Guardunha retained tabs, enclosure from a stagnated loneliness, without measure, without time,...)”. In this way are described to us the plain and timeless landscape of Tinalhas in the prologue of the romance “Casa da Malta”, written in 1944 by Fernando Namora, one of the greatest Portuguese writers of the XX century and inescapable figure of the neorealist movement. “A Casa da Malta” (everybody's house), source of inspiration to the freshman doctor and located right in front of his clinic, still remains there, immortalized in a title of one of his own work. But there are more to Tinalhas: the Church of Nossa Senhora da Assunção, dated from 1576, from which can be highlighted the Santíssimo (Holiness) Chapel, Architecture crown jewel, with a very rare altar; the Espírito Santo (Holy Spirit) Chapel, with crosses against the frontage from the XVIII century; the S. Pedro (Saint Peter) Chapel, dated from the XVII century; the 16 crosses that were scattered by the village entrances, preventing the demon's entry; the coat armed houses of the Tinalhas Viscounts and the noble manors of the well succeeded “Brazilians”; “Rossio” the village “Visit Lobby”, with a great number of well-preserved secular buildings. Tinalhas is also its people, the Sumac Sellers as they were once called when the skin dyeing was an economic activity in the area. Here was born Estevão Dias Cabral, mathematician from the second half of the XVIII century, who left a work of major importance in the Hydraulic field, creating flow velocity calculation methods and flow stream measuring. Returning to Portugal, member to the Lisbon Royal Academy of Sciences, Estevão Dias Cabral studied the problems related to the Tejo and Mondego river regulation and flooding, among others, in the name of the agriculture interest and river navigability.

In these Ocreza plans, where in along 16,2km<sup>2</sup>, in its large majority, the altitude difference doesn't exceed the 22 m, in full plateau crossed by an almost insignificant drainage, historically scarce for locals, Tinalhas is nowadays home for 585 people. Located in the Castelo Branco Field, still prevails the orchard and the olive grove, in noble soils where the forest production is gaining ground. Only the porphyroid granitic locally known as “lincheiras” barge in the green shroud, where stands out the legendary “Nave Redonda” and its golden raisin Moor princess. But the Marateca reservoir is not so far away, meaning that the future goes through the biological production of horticulture and fruit growing, that can once again replenish the region and beyond. The bet could be in new products, such as autochthones species well adapted to these poor grounds, like the case of the Sumac. This plant possesses great appliance in the pharmaceutical industries (their hydrolysable tannins are a bactericide and a HIV Virus replication inhibitor) and in dyeing, as well as in gastronomy, very appreciated in the Middle East. The existence of a strong association element in Tinalhas, standing out in this case the “Sumagre” – Heritage Safeguard and Enhancement Association, can possibly leverage the historical, ecological, ethnobotanical and nutritional value, as well as the local Rhus coriaria to industrial usage.



**Olá/Hola/Ciao/Bonjour/Γειά σου/Hallo/God Dag/Salut/Zdravo/Hello/Ahoj/Helo/Helló/ Hei**

But other products of renowned quality are today produced in Tinalhas, such as the “jeropiga”, in which they should search for certification and markets to value them. Concerning the touristic sector, Tinalhas as birthplace of Estevão Dias Cabral, should be able to create a dedicated space to the honourable scientist, embossing his work, and his studies contribute to the life improvement in Portugal.

Recommended Bibliography:

Brás Jorge, H. 1996. Tinalhas meu berço, minha raiz. Edição do Autor, Castelo Branco.  
Shabbir, A. 2012. Rhus coriaria LINN, a plant of medicinal, nutritional and industrial importance: a review. The Journal of Animal & Plant Sciences, 22(2), 505-512.  
The Editor

Carlos Neto de Carvalho  
Scientific Coordinator  
Geologist

Front Cover: Nuno Dias (Objectiva: Geopark Project, [www.naturtejo.com/objectiva](http://www.naturtejo.com/objectiva))

# ACTIVITIES OF THE MONTH



**March – Trekking calendar for 2013 in Idanha-a-Nova.** The new trekking and thematic visit calendar for the municipality of Idanha-a-Nova was released, with the support of Naturtejo Geopark. For the first semester there are 6 possibilities to visit the heritage and to see some local flora and fauna from Medelim, Oledo, Monsanto, Proença-a-Velha, Rosmaninhal and Zebreira

**March – Easter Mysteries in Idanha.** Idanha-a-Nova municipality is proud of fascinating Easter rituals. From 1st of March to 5th of May many celebrations are taking place in all the villages. There are 207 events taking place and being promoted with the support of Naturtejo Geopark.

**1st to 3rd March – Naturtejo Geopark flies to FIO 2013.** The 8th International Birdwatching Fair was organized in Monfragüe Biosphere Reserve not far from Naturtejo Geopark. Once more Naturtejo was there in a promotional booth together with Center of Portugal Tourism promoting birdwatching spots and offer in the territory.

**2nd to 3rd March – Adenex-Viajes Ambientales by the Geopark.** The Spanish tour operator Adenex-Viajes Ambientales came with 34 people to visit the Ichnological Park of Penha Garcia, the historical villages of Monsanto and Idanha-a-Velha, as well as the cultural tour in Idanha-a-Nova. Tiago Oliveira and the partner outdoor company Vila Fraga offered guiding assistance.



**6th to 10th February– Geoparks in the ITB Trade Fair in Berlin.** Geoparks are among the most innovative and Creative tourism destinations in the world. In an industry involving 6,5 billion dollars and 260 million jobs, the sustainable use of geological heritage and cultural landscapes through responsible tourism is seen by experts as winning alternative for territorial marketing. Strongly claiming for this affirmation is the 3rd place obtained by Geoparks in the “Best Exhibitor Award 2013”, in the world’s leading tourism trade show of Berlin. The participation in ITB was organized by Naturtejo Geopark together with 5 European geoparques, representing 92 territories spread by 26 countries of the Global Geoparks Network. The Geoparks stand with the motto “Millions of years, once in a lifetime experiences” was acclaimed in the gala held in Palais Funkturm for 600 guests, among ministers, tourism officials from several countries and participants in ITB. Evaluation set up by the prestigious Cologne Business School to more than 10.000 stands representing 188 countries distributed by 160.000 m2 and 26 pavilions, awarded in 11 categories.

The partnership managed by Naturtejo Geopark, for the Geoparks stand, is well representative of an intercultural dialogue at a European scale, with representatives from geoparks TERRA.Vita, Harz.Brunschweiger Land.Ostfalen and Vulkaneifel (Germany), Rokua (Finland), Bohemian Paradise (Czech Republic) and Cuesta Vasca (Spain). These geoparks presented the best they have to offer for potential tourist and professionals in the sector: Naturtejo Geopark brought to ITB the famous Adufe player women from Idanha-a-Nova, the well know chef Mário Ramos and a cake designer to fill with rhythms and tastes from the most genuine and original Portuguese culture, the Responsible and Adventure Tourism hall. Amazing fossils to see and touch, an exhibit from best-quality local products (including tasting) and a performance of videoart especially developed by the Italian paleontologist (and artist) Andrea Baucon made the stand Geoparks as a place of synergies. It is worth to mention the 3 day visit of the Chief of UNESCO Earth's Global Observatory, Prof. Patrick McKeever and the visit to Geoparks stand of tourism directors and officials from Turkey, India, Indonesia, Bulgaria, Kazakhstan, Gabon, Uganda, as well as politicians from German regions and municipalities, which were all interested to know more and reproduce several of the best practices developed by geoparks concerning tourism and develop of products from local resources. Also important to mention was the 6th place obtained by the stand of Portugal in its category of the Best Exhibitor Awards. More than 172.000 professionals and public visited ITB Berlin, considered by many as the reference for trends in tourism worldwide. More information: <http://www.cbs-bea.com/en/winners/2013/>



**13th March - Learning geology in the Ichnological Park of Penha Garcia and Monsanto geomonument.** Fundão High School brought 67 students and 4 teachers in the scope of the disciplines of Biology and Geology from the 10th grade. They visited with Isménia Araújo and Manuela Catana the Ichnological Park of Penha Garcia and Monsanto inselberg.



**15th March – Workshop Innovation and Development: European Geoparks.** Arouca Geopark held a workshop on Innovation & Development having selected Iberian geoparks as case studies: Sobrarbe, Maestrazgo and Naturtejo European and Global Geoparks. Manuela Catana was invited to talk about geoconservation and the educational survey of Naturtejo Geopark.

**16th to 17th March – Meeting of Jewish and Christian religions during Easter.** The village of Medelim with the support of the municipality of Idanha-a-Nova and Naturtejo Geopark hosted a very innovative festival dedicated to share Jewish and Christian traditions in the Easter period. There was a market with Kosher products together with local ones, Jewish and traditional music, revival of historical periods by a group of street theater and expert talks about Easter traditions of the Jews and Christians. A workshop reunited the Rabin from Belmonte and the representative of the Bishop of Portalegre. Finally, a solidarity walk by the Balconies Trail made about 100 people to bring toys, clothes and non-perishable food to distribute among the most needing population.

**18th to 22nd March – Turkish researchers are training in the Geopark.** Erasmus Staff Mobility for Staff Training Programme is being used by Turkish Professors for training in the Naturtejo Global Geopark. The Associate Professors Kamile Gülüm from Balıkesir University and Gülpınar Akbulut from İnönü University came for a five day-visit dedicated to learn more about the development of a geopark and the educational activities and equipments. They were welcomed at the geopark's headquarters by Carlos Neto de Carvalho, Manuela Catana and Joana Rodrigues for an introductory meeting. Then they visited the travelling exhibition about mining in villages of Idanha-a-Nova, now placed in Proença-a-Velha social centre, the Ichnological Park of Penha Garcia and the historical village of Monsanto. Together with Carlos Neto de Carvalho they walked early in the morning to assist to the flight of the griffon vultures in the Erges gorge; they were welcomed in the Management School for a guided tour. Together with Manuela Catana they visited the Stonemason Museum at Alcains and the Environmental Interpretative Centre at Castelo Branco. Professors gave also a close look to the modern Living Science Centre dedicated to the Forest and the new Rock Art of Tejo Interpretative Centre. Considering geosites they visited the viewpoint of Portas de Almourão geomonument, the fossil trees in the Tejo Culture House gardens and travelled across Portas de Ródão Natural Monument.



**21st and 22nd March – I International Meeting of the House of Sciences in Lisbon.** The I House of Sciences International Meeting was organized by the House of Sciences, Gulbenkian Foundation, under the main subject “The use of Digital Resources in the context of Education”. In this meeting 300 teachers were participating and assisted to more than 80 oral and poster presentations, conferences and workshops, reuniting teachers and national and international experts focused on educational practices. By invitation of the House of Sciences Joana Rodrigues from Naturtejo Geopark took part in the Organizing Committee from this Meeting, chairing the session Digital Resources for Biology and Geology and presenting the invited talk “How sands may reach the school – from didactics towards digital” under the session “From the lab towards the digital – modeling in Biology and Geology”. The project House of Sciences ([www.casadasciencias.org](http://www.casadasciencias.org)), Gulbenkian online platform for teachers, which is coordinated by Professor Ferreira Gomes and the Engineer Silva Pinto, has already more than 11 000 users.



**22nd and 23rd March – European Geoparks Coordination Meeting in UNESCO headquarters.** The 31st European Geoparks Coordination Meeting was held in the headquarters of UNESCO in Paris, a major achievement towards the establishment of Geoparks as an UNESCO official initiative.

At the same time, for celebrating the open days of UNESCO a Geoparks exhibition was developed which ended up with a reception to geopark coordinators and UNESCO officials with Geopark's products, where DPO cheese from Idanha-a-Nova, Subito red wine and the new Sweet Cheese chocolates were present representing Naturtejo Global Geopark. Two Geoparks became new members of EGN, including Azores Geopark, the third Global Geopark now existing in Portugal! Together with the crossbordering Karavanken Geopark from Slovenia/Austria the European Network is now composed of 54 territories. During the coordination meeting many issues were discussed including the successful results in ITB trade show in Berlin, with the stand Geoparks organized by Naturtejo Geopark, besides the work developed by the Portuguese Forum of Geoparks, presented by Carlos Neto de Carvalho. The discussion about the integration of Global Geoparks in to the UNESCO official framework was clarified by the presence of both UNESCO officials and Geopark experts that explored the major differences and innovation between UNESCO programmes and Geoparks.



**24 and 25th March – Teachers from Barcelona in the Geopark.** A group of 8 geology teachers and family from Barcelona, affiliated in AEPECT (Spanish Association for the Teaching of Earth Sciences) and participated in the II GEOSchools conference held at Alcalá de Henares, Spain, came to visit Naturtejo Geopark. Taking opportunity from the borderland landscapes, they visited the Ichnological Park of Penha Garcia and made a stop to look at the inselberge “archipelago” of Monsanto-Moreirinha-Alegrios. They were interested to meet the educational resources available for students in the Naturtejo Geopark. But in the next day heavy rain did not make them feel uncomfortable. They visited the fossil trees from Vila Velha de Ródão, and the Rock Art Interpretive Centre, where the geological setting was presented by Joana Rodrigues. Then they visited Portas de Almourão viewpoint, looking for the Variscan Orogeny evidences...and some griffon vultures. Finally they found Portas de Ródão Natural Monument, where Tejo river crosses the quartzite mountain.

**28th to 31st March – Naturtejo Geopark and Tierra Fuego in the Center Region .** Tierra Fuego Spanish tour operator came to the Center region for a program with Naturtejo. The group visited Aveiro, Coimbra, Viseu, Buçaco gardens and Conimbriga Roman city.





# IMPACT OF GEOPARK IN MEDIA

## Newspapers & www

- March (Ensino Magazine) – Weekend in the Geopark
- March (Raiano) – Geoparks among the winners of the “Best Exhibitor Awards 2013”
- 6th March (Diário de Coimbra) – Geopark promoted in Portugal and Spain
- 6th March (Diário de Leiria) – Geopark promoted in BTL and International Trade Events
- 6th March (Diário de Aveiro) – In Portugal, Spain and Germany Naturtejo Geopark is promoted in BTL, FIO and ITB
- 7th March (Reconquista) – School contest “the water uniting us”
- 12th March (Povo da Beira) – Naturtejo Geopark and UNESCO launch the school contest
- 13th March (Gazeta do Interior) – Jews and christians share the Easter
- 19th March (Povo da Beira) – In the most important tourism fair in the world – ITB Berlin – Geoparks prized in the “Best Exhibitor Award 2013”
- 21st March (Reconquista) – ITB – 3rd prize for the Geopark
- 21st March (Reconquista) – Escape Livre and Radio Altitude – Armindo Jacinto awarded
- 26th March (autoanDRIVE.com) – BMW X Experience/Naturtejo Geopark is in May 4x4 meeting nature!
- 28th March (Reconquista) – Naturtejo highlighted in Paris
- 28th March (Reconquista) – The return of Asparagus and Truffles
- 29th March (Diário de Coimbra) – Naturtejo was in the European Geoparks meeting
- 29th March (Diário de Leiria) – Naturtejo was in the European Geoparks meeting
- 29th March (Diário de Viseu) – Naturtejo was in the European Geoparks meeting

## TV & Radio

- 24th March (TSF national radio) – “Meetings with Heritage” talk show - Naturtejo Geopark: a landscape to discover. Interview to Armindo Jacinto, Carlos Neto de Carvalho and António Catana, local researcher

# SCIENTIFIC CONTRIBUTIONS FOR THE GEOPARK AND THE GEOSCIENCES



- Rodrigues, J. - Como as Areias Chegam à Escola – Da Didática ao Digital. In: Livro de Resumos-. I Encontro Internacional Casa das Ciências. 21 e 22 de Março de 2013, Lisboa, 101-102.

<http://www.naturtejo.com/ficheiros/conteudos/files/Resumo%20RODRIGUES%202013.pdf>



## PROMOTION FOR THE GENERAL PUBLIC

- Neto de Carvalho, C., Couto, H. & Valério, M. - The Trilobites Tour in Portugal – developing the first geotourism itinerary dedicated to paleobiodiversity. European Geoparks Magazine, 10: pp. 31.

- Catana, A. – Easter Mysteries Idanha 2013. Câmara Municipal de Idanha-a-Nova, 34 pp. (booklet in Portuguese language)

**QUANDO A GENTE ANDAVA AO "MENÉRIO".**

**MEMÓRIAS MINEIRAS DO CONCELHO DE IDANHA-A-NOVA**

**O CASO DE PROENÇA-A-VELHA**

Proença - Liga de Desenvolvimento de Proença-a-Velha  
Salão Polivalente

9 de Fevereiro a 31 de Março

Logos: Centro Cultural Nacional, Proença-a-Velha, FCT, etc.

**PÁSCOAS JUDAICA E CRISTÃ**  
*Uma Festa Duas Culturas*

**Sábado 16**

Local: Capela de Misericórdia  
16:00 - Cantos Tradicionais "Cantado das Istantas"  
17:00 - Conferência "Páscoas Judaica e Cristã"  
Dr. António Catana (Traduções Quaresmais e Páscoa)  
Cof. Assonente Carmo (Páscoa Judaica)  
18:00 - Concerto com cantos de Santa Maria por Eduardo Ramos  
21:00 - Fados de Coimbra pelas ruas do burgo até à Misericórdia

**Domingo 17**

08:30 - Percussão pedestre - Páscoa solidária! Rota dos batózes - Madalim (Igreja Matriz) inscrições / informações: 237 202 900. Recolha de alimentos, roupas e brinquedos.  
10:00 - Abertura - Mercado Judaico (Produtos Kosher) e Mercado Cristão (Produtos Regionais (Produtos Kosher) / Temporadas Tradicionais (Produtos Regionais) - Cortejo de rezas de ano jubileu referências à Ribadella pelas suas paróquias judaicas de Madalim.  
12:00 - Inauguração Oficial do Cartameo  
Início das animações Musicais: Galanum Galandana e os Pauliteiros de Miranda Al Medievo cantos Judaicos.  
Os músicos saem em marcha pelas ruas de Madalim.  
Tramplinistas e saltobancos interrompem pelas graças em músicas e arremedidos.  
No generoso, os judeus que se dedicam ao estudo do Talmude, comentam o Pentateuco.  
Espetáculos de teatro são apresentados nos praças e largos, assim como músicas e danças, tanto cristãs como sefarditas.  
Cantura da Carta de Privilegios D' El Rei reconhecendo à comunidade judaica o direito de manterem os seus costumes e tradições.  
-Eduardo Ramos com Cantos Sefarditas  
18:00 - Colóquio "Encontro de Culturas" - Casa da Cultura  
-Rabino Eliahu Salas (Belmonte)  
-Cânego Basílio (representante do Bispado de Portalegre)  
-Dr. Jorge Patrão (Juiz de Juizarias)  
-Dr. António Salgado (Reitor das Misericórdias)  
-Arquitecto José Alonzo (Indústria e Arquitectura)  
-Grupo de Encenação das Almas de Madalim  
19:00 - Encerramento do Cartameo

**MEDELIM**

**16 e 17 março | 2013**  
**IDANHA-A-NOVA**

Logos: Câmara Municipal de Idanha-a-Nova, etc.

**EVOLUÇÃO da FLORESTA em PORTUGAL**

O Centro Ciência Viva da Floresta tem a honra de convidar V. Ex<sup>ª</sup> para a inauguração da exposição **Evolução da Floresta em Portugal**, no próximo dia 3 de abril às 15h00, no Centro Ciência Viva da Floresta.

Orientação científica Professor Doutor João Pais  
Departamento de Ciências da Terra, FCT

Agradecemos a confirmação da sua presença: 274 670 220 ou [info@floresta.cienciaviva.pt](mailto:info@floresta.cienciaviva.pt)

Logos: Centro Ciência Viva da Floresta, FCT, etc.



# PROMOTION FOR THE GENERAL PUBLIC

**IAMG 2013 Mathematics** **ANNOUNCEMENT**

**15th ANNUAL CONFERENCE OF THE INTERNATIONAL ASSOCIATION FOR MATHEMATICAL GEOSCIENCES**

**Frontiers of Mathematical Geosciences: New approaches to understand the natural World**

**Madrid (Spain) 2-6 September 2013**

**Background**

Since the International Association for Mathematical Geosciences (IAMG) was founded in 1968 in Prague, its mission has been to promote international co-operation and the use of mathematics in geoscience research and in technology. The IAMG Annual Conference provides an excellent environment to show the latest advances in geomathematics and a great opportunity to make contacts and gather new ideas. Furthermore, the IAMG Madrid 2013 Conference is an event of the Mathematics of Planet Earth 2013 ([www.mpe2013.org](http://www.mpe2013.org)), another reason to be in Madrid from the 2nd to the 6th of September 2013.

**Sessions**

Advances in classical statistics relevant to the Geosciences - Frontier Geostatistics - Compositional Data Analysis Applied to Geochemistry - Data assimilation in Geosciences Machine learning in Geoscience applications - Spatiotemporal analysis structural complexity and extreme behaviour - Parameterization of soil systems at different scales - Fractals, Chaos and Complexity in the Earth System - Remote Sensing a Changing World - Modern sensor data (and their processing) in Engineering, Geology - Geographic Information Systems/GIS/Geomatics - Quantitative methods in Cosmology and Land Surface Processes - Deformation modeling, Geodynamics and natural hazards - Hydrogeology: From process understanding to improved predictions - Quantitative hydrology: working across scientific disciplines and time-space scales - Quantitative Environmental Geology - Modeling of energy resources - New Developments in Oil and Gas Discovery Modeling - Open Session on Mathematics of Oil Recovery - Geostatistical priors in inversion of geophysical and engineering data - Mineral and energy resources for planet Earth: evaluation, extraction and optimal management - Mathematical Petrophysics: Theory and Applications - Recent advances in Quantitative Methods applied to Stratigraphy and Paleontology - Mathematical Geosciences and Planetary Geology - Mathematics of Planet Earth

**Important Dates**

January 1, 2013:	Abstract submission starts/reduced registration fee starts
February 1, 2013:	Abstract submission ends
March 1, 2013:	Notification of abstract acceptance/Extended abstract submission starts
April 1, 2013:	Extended abstract submission ends
May 1, 2013:	Revised extended abstracts returned to authors
May 15, 2013:	Early registration ends
May 20, 2013:	Submission of final versions of extended abstracts ends
September 2-6, 2013:	IAMG Madrid 2013

For more information visit  
<http://www.igme.es/internet/iamg2013/>

**SONDEO DE ALCALÁ DE HENARÉS MADRID - 1924**

Work for geomorphology research. 100% reduces energy. Annual de Invenio. Madrid España. 1924-1928. Dataset of Alcala de Henares in the English Classification of Biomes.

**ACAFA** Nº 5 (2012) **On-line**

Município **Proença-a-Nova**

## CONVITE



Por ocasião das celebrações do Dia Mundial da Terra e do Dia Nacional do Património Geológico (22 de Abril), o coordenador da Associação de Estudos do Alto Tejo e o Presidente da Câmara Municipal de Proença-a-Nova têm a honra de convidar V. Exa a assistir à apresentação do número 5 da revista digital Açafa On-line.

Esta edição inclui um dossier temático dedicado às Guerras Peninsulares e às estruturas militares da chamada Linha Defensiva das Talhadas-Moradal, que têm beneficiado de ações de estudo e valorização no concelho de Proença-a-Nova, um conjunto muito significativo de textos sobre património geológico, elaborados por técnicos ou colaboradores do Geopark Naturtejo, e outros textos, sobre investigação arqueológica, dialetologia, arquitetura vernacular, economia rural, um contributo para demografia histórica e registos fonográficos de poesia popular. Estes documentos estarão disponíveis para descarga, a partir da data de apresentação, na página [www.altotejo.org](http://www.altotejo.org)

A sessão terá lugar na Cafeteria/Galeria Municipal do Parque Urbano, em Proença-a-Nova, no dia 21 de Abril de 2013 (domingo), com início pelas 14h30.



# PROMOTION FOR THE GENERAL PUBLIC

V TTransGeopark  
Tectónica acima, erosão abaixo!  
27 e 28 de Abril

Mais uma edição do TTransGeopark, um passeio TT Turístico na boa companhia de geólogos que o levarão a conhecer segredos escondidos nas pedras de um território reconhecido pela Unesco!

2 dias plenos de convívio, comunhão com a Natureza e ainda alguma adrenalina!

90€ por pessoa! Contacto: [casadoforno@gmail.com](mailto:casadoforno@gmail.com) / 965620092

Inclui a inscrição, alojamento, 2 refeições completas e brindes.

Logos: Casa do Forno, naturtejo, ORVALHO

iNature

IDANHA-A-NOVA  
**ROSMANINHAL**  
Qua. \ 01 \ MAIO

**GRANDE ROTA DA TRANSUMÂNCIA**

ALARES > ROSMANINHAL  
200 OVELHAS \ 10000 PASSOS

8h00  
Concentração no Rosmaninhal (resíno das Festas)

8h30  
Bucha do pastor / pequeno-almoço

9h00  
Início da 1ª viagem da Grande Rota da Transumância  
Percurso com Rebanho

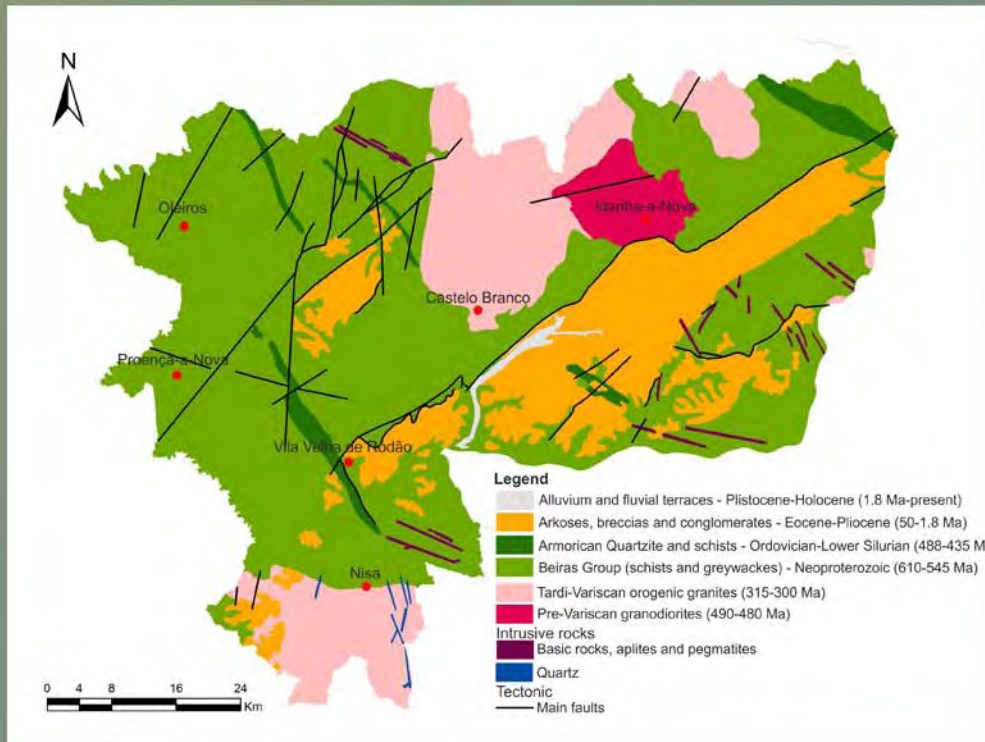
12h00  
Chegada ao Rosmaninhal / Início da animação musical  
Demonstração da feitura de queijo e tosquia manual

13h30  
Almoço convívio da Transumância

15h00  
Passagem de filme da Transumância  
Conversas com pastores locais  
Feira de Produtos locais  
Continuação da animação musical

Inscrições: [www.transumancia.com](http://www.transumancia.com) T. (+351) 277 202 900 **INSCRIÇÃO GRATUITA**

Logos: Casa do Forno, naturtejo, ORVALHO, PROVIERE, etc.



**CRUZIANA**

www.geoparknaturtejo.com